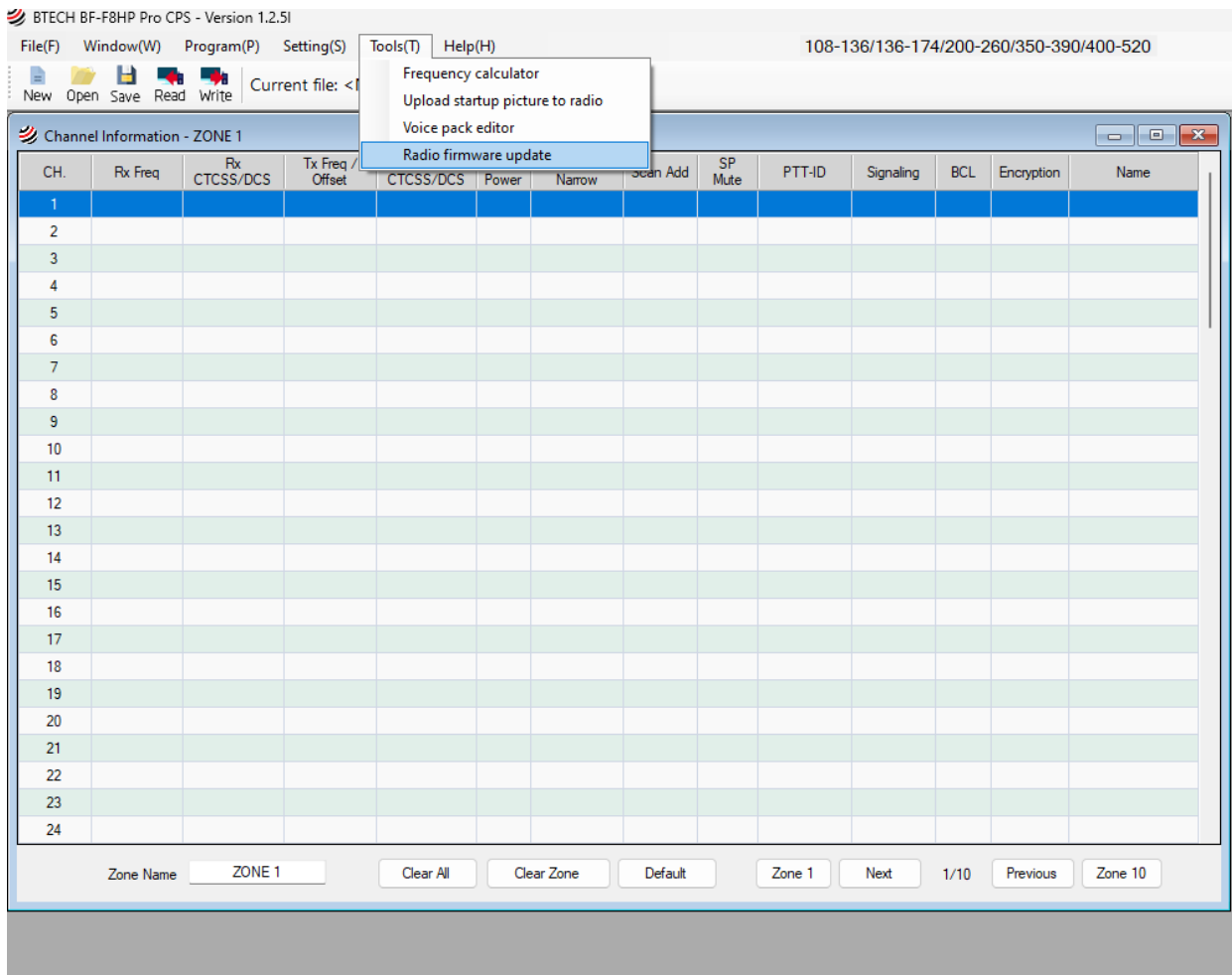


Firmware Update Steps for the BF-F8HP PRO

Follow these steps to update the firmware of your BF-F8HP PRO using the CPS software and Bootloader tool:

Step 1: Open CPS Software and Access Firmware Update Tool

1. Open the BTECH BF-F8HP PRO CPS software on your computer.
2. In the top menu bar, select **Tools (T)**.
3. From the dropdown menu, choose **Radio firmware update**.

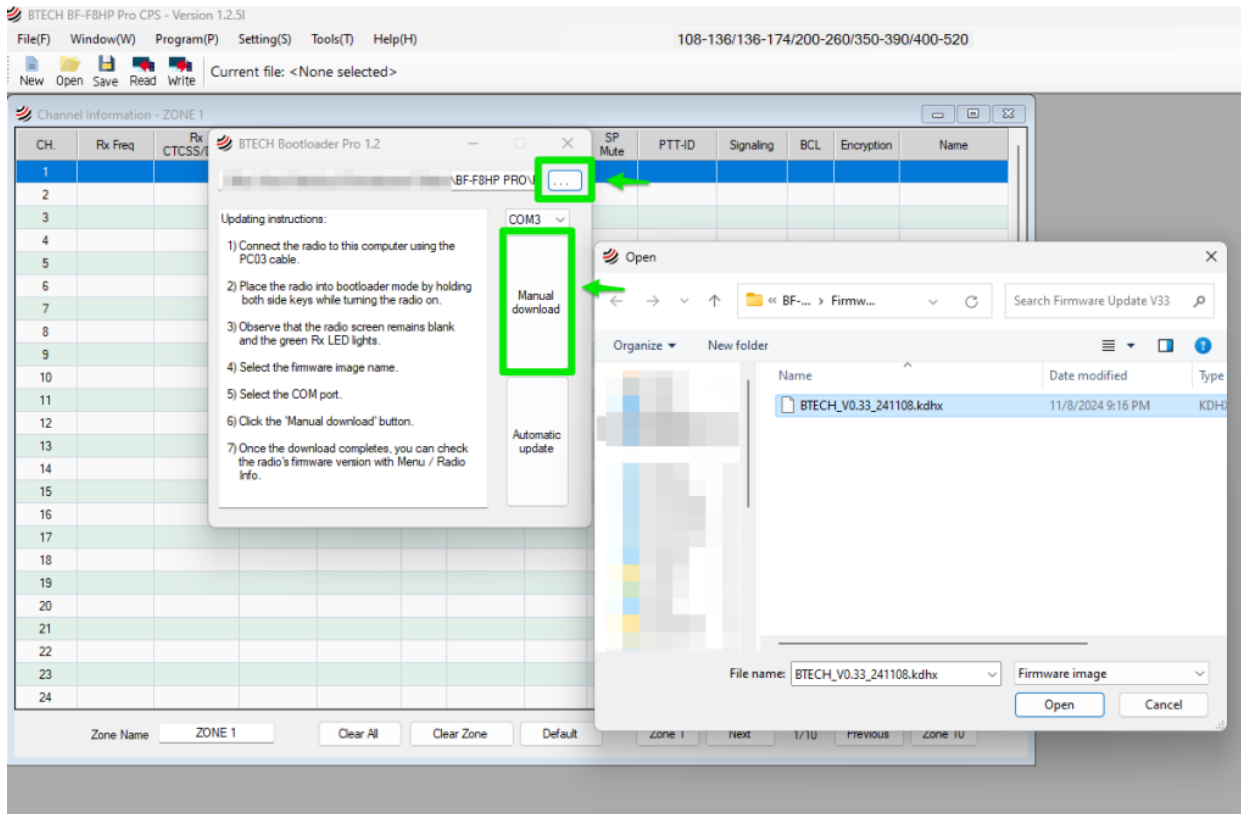


Step 2: Connect Your Radio and Enter Bootloader Mode

1. Use a PC03 programming cable to connect your BF-F8HP PRO radio to your computer.
2. Place the radio in bootloader mode:
 - Turn off the radio.
 - While holding down both side keys, turn the radio back on.
 - The radio screen will remain blank, and the green Rx LED will light up, indicating that it is in bootloader mode.

Step 3: Select Firmware File and COM Port

1. In the Bootloader window, click the ... (browse) button to locate the firmware file.
 - A file selection window will appear. Navigate to the folder where you saved the firmware file (e.g., BTECH_V0.33_241108.kdhx), select it, and click **Open**.
2. Select the COM port that corresponds to your connected radio.



Step 4: Start the Firmware Update

1. With the correct firmware file and COM port selected, click the **Manual download** button to start the update process.
2. The firmware will be downloaded to the radio. Wait until the process completes.

Step 5: Verify Firmware Update

1. Once the update is complete, disconnect the radio from the computer.
2. Power on the radio, then check the firmware version:
 - Go to **Menu > Radio Info** to confirm that the firmware has been successfully updated to the new version.

Your BF-F8HP PRO is now updated with the latest firmware.

We Value Your Feedback

Your input is essential to us. If you have questions, encounter any issues, or wish to provide feedback on the new firmware, please reach out to our support team at support@baofengtech.com.

We hope you enjoy the new features and improvements in Firmware Version V0.33. Thank you for choosing BTECH!